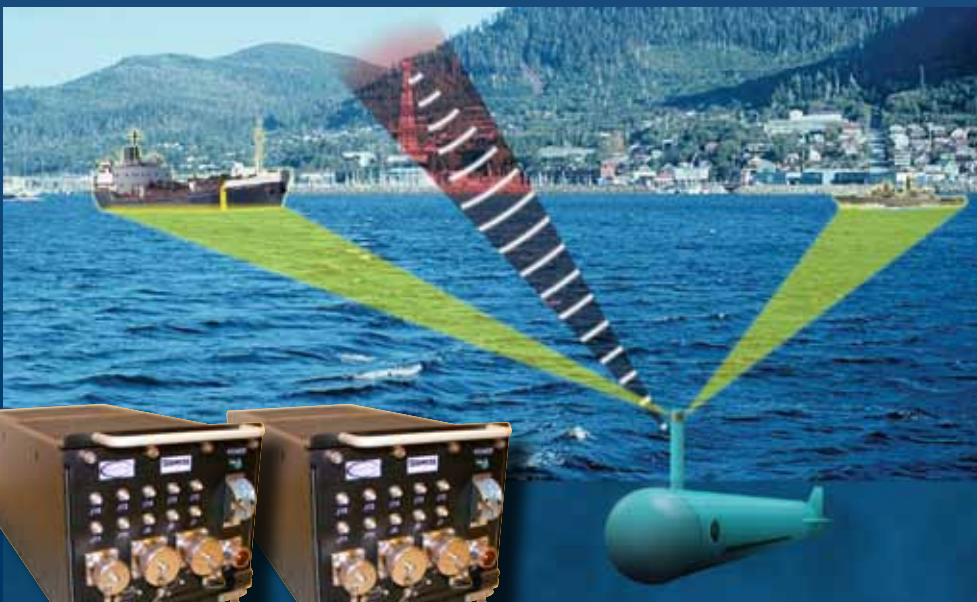




Integrated COMINT/ELINT System for Small Tactical Platforms

Small ISR System

- Built from Proven Systems
- VHF, UHF, and SHF Environmental Survey
- Real-time Threat Warning and Situational Awareness
- Remote Operation for Unmanned Reconnaissance Vehicles
- Data Collection for Remote Downlink and Local Storage
- Network Centric Operation and Warfare Compatible
- Flexible and scalable, available in COMINT-only, ELINT-only, or as an integrated COMINT/ELINT package



Antenna Capabilities

- 4-Element Dipole Array (100-700 MHz)
- 8-Element Vivaldi Array (700-3000 MHz)
- 5-Element Spiral Array (2-18 GHz)
- Omni Bi-Cone (2-18 GHz)
- GPS/802.11/Freewave

COMINT Capabilities

- Frequency Coverage: 100 MHz to 3.0 GHz
- 25 MHz Instantaneous BW for Detection and DF
- 3 Channel DF
- Signal Classification

ELINT Capabilities

- Freq. Coverage: 2-18 GHz
- 500 MHz Instantaneous BW for Signal Detection
- 80 MHz Instantaneous BW for Direction Finding
- 5-Channel DF
- Emitter Identification

For more information, contact
Jon Stoehr, 703-828-2176
jon.stoehr@argonst.com



Corporate Headquarters:
12701 Fair Lakes Circle, Suite 800
Fairfax, VA 22033 | www.argonst.com
703-322-0881 Fax: 703-322-0885



Integrated COMINT/ELINT System for Small Tactical Platforms

INTERFACES

Ethernet

- Multiple Ethernet interfaces provide Internet protocol (IP) based network connections
- Capable of accepting commands from multiple users within network
- Capable of Routing commands to other STINGRAY sensors within network

Global Positioning System (GPS)

- Built-in GPS antenna
- Accepts platform GPS antenna input

Timing

- Accepts platform timing inputs (10 MHz, 1pps)

Navigation Data

- Accepts platform navigation data via Ethernet or serial interface

PHYSICAL / ENVIRONMENTAL

COMINT Chassis Size

- 8.3"W x 6.5"H x 16"D

Chassis Size

- 8.3"W x 6.5"H x 16"D

Antenna Size

- 8" Diameter x 24.5"H

COMINT Chassis Weight

- ≤ 40 lbs

ELINT Chassis Weight

- ≤ 40 lbs

Antenna Weight

- ≤ 30 lbs

COMINT Power Consumption

- ≤ 220 Watts

ELINT Power Consumption

- ≤ 180 Watts

Input Voltage

- 48VDC
- Minimal effort to support additional input voltages

Temperature

- Operates from -20 C to +60 C

Humidity

- Operates from 10% to 90% non-condensing humidity

EMI/RFI

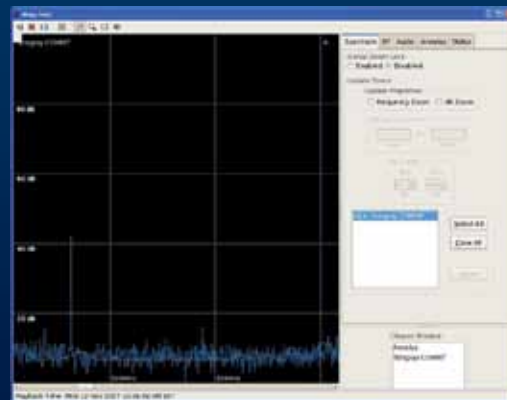
- Designed to meet MIL-STD-461E

Environmental

- Designed to meet MIL-STD-810F



Tactical Intercept Map (TIM)



Spectrum Display

